



# BB-M2 User Manual

**1. Software Installation-Phone App Download**  
1.1 Iphone: Search " DigoCam " in iphone App Store and install it.  
Or scan right QR code to download and install it.



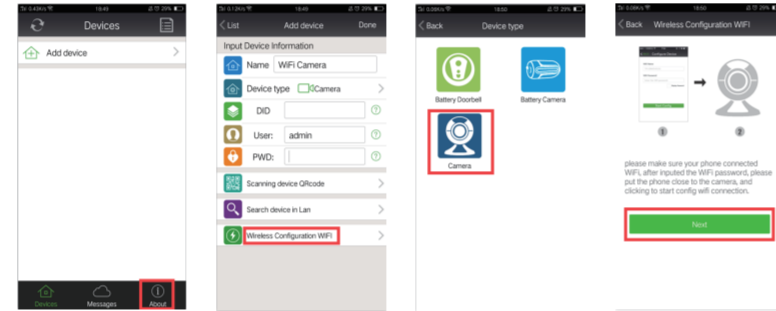
2.2 Android: Search " DigoCam " in Google Play and install it.  
Or scan right QR code to download and install it.



More information please visit : [www.mydigo.com](http://www.mydigo.com)

## 2. Add Camera

2.1 Add it as following pictures: (for first added)



2.2 If the camera has be connected to the wifi, add it as following ways: (for second added)

① Use "Scanning Device QR Code" to scan the QR code of the camera backside, And add it..



② If your network is as the same as the camera's (in LAN network), use "Search Device In Lan" to search the camera, and add it.



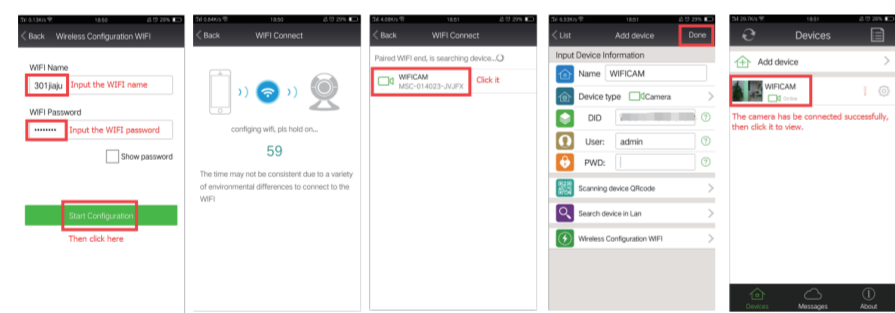
Warn: If the camera has be modified password, you need to input the correct password, then add it.

## 3. Button Function



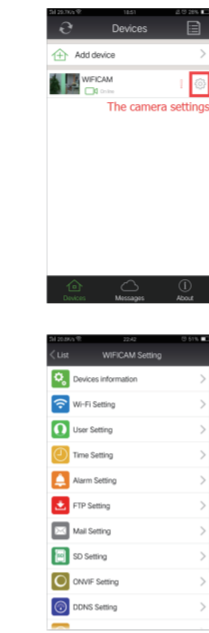
- (1) Pan mirror image
- (2) Tilt mirror image
- (3) Left to right are pan cruise
- (4) Tilt cruise
- (5) Audio
- (6) Snapshot
- (7) Recording
- (8) Resolution ( High definition, Standard Definition, Fluency )
- (9) Preset point
- (10) Brightness
- (11) Contrast
- (12) Restore
- (13) Infrared Lamp ( Open or Close )

Note :  
① Default is "Wireless Configuration WIFI" mode.  
② If the camera can't connect to the WIFI, Long press "RESET Button", will restore the factory settings, And connect it again as 2.1 shows. (the "Reset Button" in the top of camera with a small hole, press with a toothpick.)



## 5. Device Settings

Click "Tool" enter the setting interface, setting the device

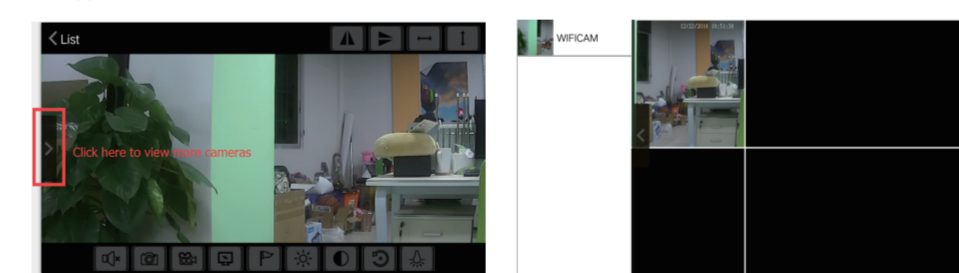


- (1) Device Information: View device information.
- (2) WIFI Setting: Set up a device connected to the home or office wireless network, achieve wireless monitor.
- (3) User Setting: Set up Administrators and Operators' user ID and Password, which achieve multi-user's management.
- (4) Time setting: Set up device time.
- (5) Alarm setting: Set up motion detection, alarm input.
  - ① Motion detection: Motion detect sensitivity range from 1 to 10.
  - ② Registration input GPIO protection: low level and high level for option.
  - ③ Voice Detection: High sensitivity, middle sensitivity, low sensitivity for option.
  - ④ PIR Alarm: Can open PIR alarm.
- (5) Alarm Trigger: Presets linkage alarm/IO Linkage alarm, Email alarm, TF card record, upload snapshot.
- (6) FTP Setup: Setup FTP server, Port, User ID, Password and Interval time.
- (7) Email Setting: Setup email sender and one or more receivers (more receivers need start from the first receiver).
- (8) SD Card Setup: Setup related parameter for SD Card Record and storage.
- (9) ONVIF\_RTSP Setting: Setup ONVIF protocol state in accordance with NVR ONVIF, RTSP stream state, RTSP User, RESP password, RESP port.
- (10) DDN Setting: Setup Device Dynamic DNS.
- (11) Device Name Setting: Setup device name.
- (12) Speech and Language Setting: Setup voice prompt device.
- (13) Led Setting: Setup indicator switch.
- (14) Push Certificates Update: APP push synchronization update certificate, IOS push back in order to receive information about the device(IOS App)

6.4 The alarm message, alarm record playback, local record playback and snapshot are in the Messages.

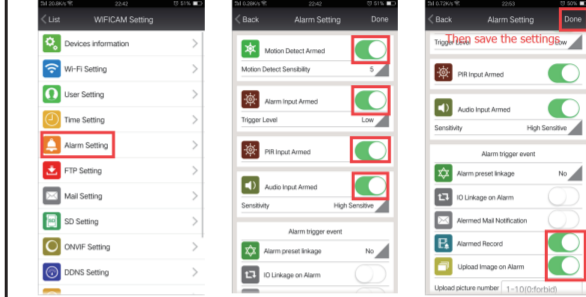


## 7. Support 4 Cameras Viewed at The Same Time

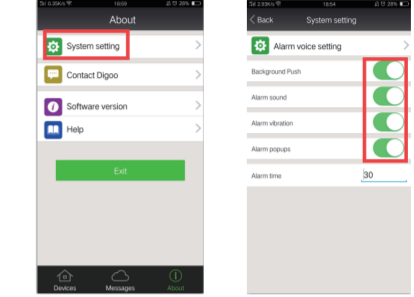


## 6. Alarm Setting

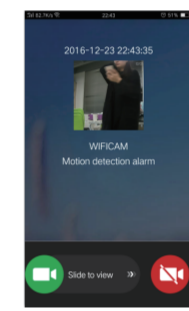
6.1 Open Alarm Process



6.2 Alarm Voice Setting

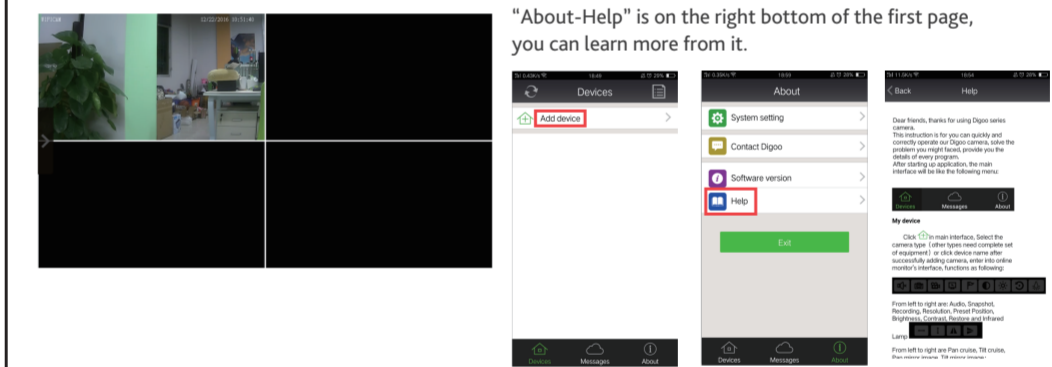


6.3 After open all the alarm settings, once the camera detect a voice or motion, the camera will send you an alarm message, like a phone calling, and begin to record the alarm motion.



## 8.APP User Manual

"About-Help" is on the right bottom of the first page, you can learn more from it.



## 9.Contact us

If you have any question, feel free to contact us on "support@mydigo.com" at any time, we will have some guys to answer your question.And like us on facebook, we will have more information posted at Digo Facebook, join us now.

